

## IN YOUR PACK:



## YOU WILL ALSO NEED:

Paintbrush or sponge

PVA glue



Plastic tablecloth

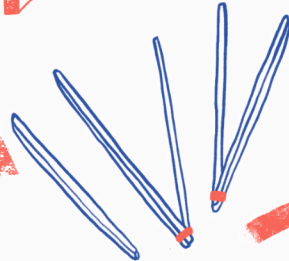
Scissors

# HOW TO MAKE A STAR LANTERN:

**Start**

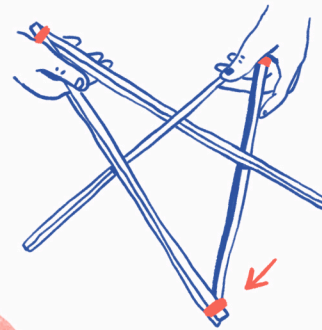
Grab 5 long sticks and your masking tape to make the first star shape ...

Start by making 2 'V' shapes with 4 of the sticks and tape the ends firmly like this:



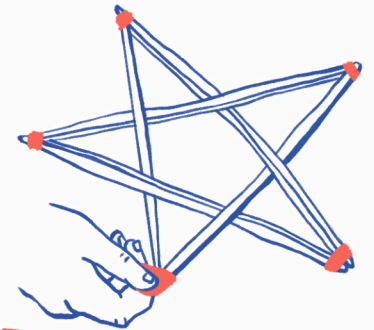
**2**

Slot the 2 'V' shapes you made together and tape the 2 ends that join up.



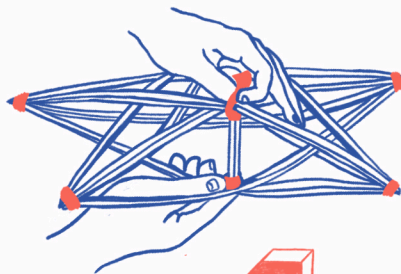
**3**

Join the 5th stick to the remaining ends and tape in place. Make sure to use lots of tape so that all ends are secure.



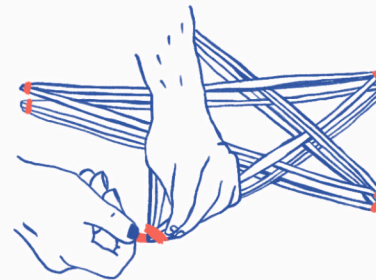
**6**

For this next step you will need your 5 short willow sticks. Carefully pull apart the centre of your star, wedge the sticks along the joins in the centre and tape in place.



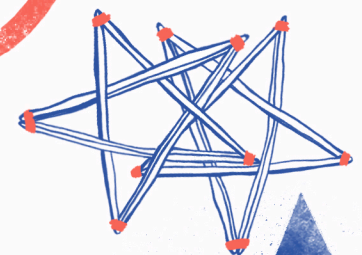
**5**

Stack both stars on top of each other with all the points lined up. Strongly tape the points together.



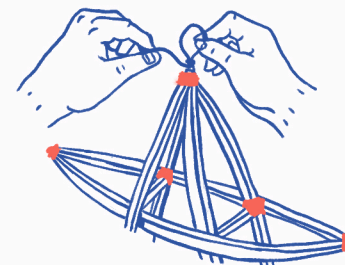
**4**

Get the remaining 5 long sticks and repeat steps 1-3 to make a second, identical star.

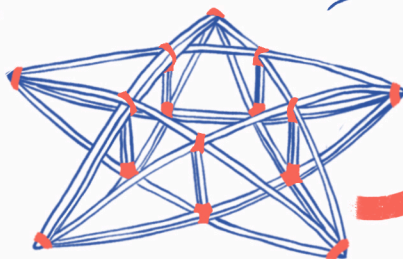


**7**

Choose a point to be the top of your star. Using the wire in your pack, make a loop to hang your lantern from.

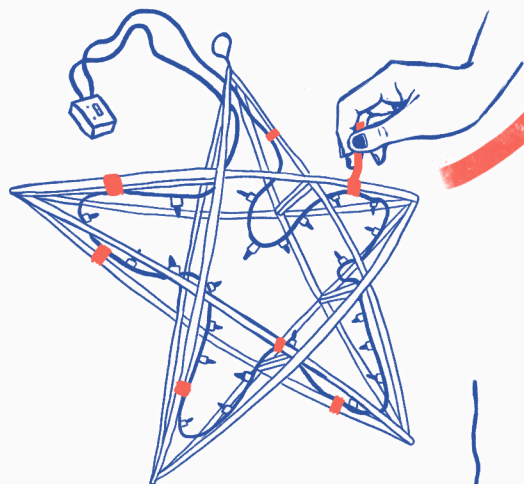


You should now have your 3D star shape! Make sure all your joins are taped down securely. Don't worry if it looks messy, it will get covered in the next steps.



TURN THE PAGE

- 9** Arrange the string lights along your frame, making sure that all the bulbs are pointing inwards. Tape the wire in place and keep the battery pack outside the frame, near the top of your lantern.



- 10** Mix 50/50 water and PVA glue together.

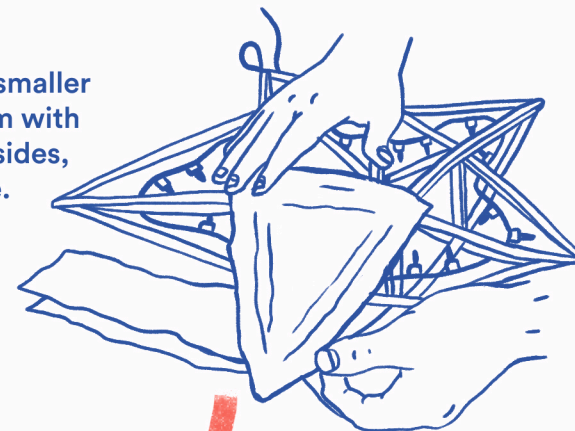


**tip:**  
Keep your table protected by covering it with a plastic cloth before you start using PVA glue.

- 11** Cut your tissue paper into smaller shapes and thinly coat them with your PVA mixture on both sides, using your brush or sponge.



- 12** start covering your lantern with the wet paper pieces. Fold the edges round to attach them to the frame. Make sure all the paper pieces overlap by at least 2cm.



- 14** Decorate your lantern by cutting shapes out of black paper or translucent candy wrappers and gluing them onto its surface. You can even paint directly onto your lantern once it's fully dry.



- 13** Check that the entire frame is covered with paper and smooth down any bits that are sticking out using your brush/sponge.

Once it looks nicely covered, leave it to dry.

**tip:**

If you want to hang your lantern outside, coat it with an extra layer of PVA glue.

Illustrated by Jumana Mekan.

fusionarts

OXFORD  
CITY  
COUNCIL

CHRISTMAS  
LIGHT  
FESTIVAL

